



Eagle's Economic

Community Development Corporation (EECDC)

Educational, Community & Business Outreach

EIN#55-0882752

Eagle's Economic Community
Development Corporation



People working together in a strong community with a shared goal and a common purpose can make the impossible possible.

Tom Vilsack



Eagle's Economic
Community Development Corporation (EECDC)

Educational, Community & Business Outreach

By Tom Vilsack

Inspirational quote

Our Mission...

To enhance the quality of living for the citizens of South Metropolitan Atlanta by providing empowering diverse programs, services and resources.

We will align ourselves with the appropriate resources, corporate and educational partners, organizations and government/community leaders to effectively:

- Serve as a catalyst for socioeconomic development



Our Mission cont'd...

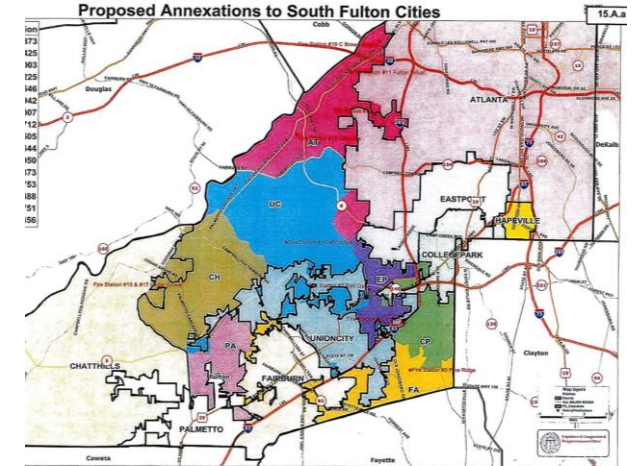
- Provide workforce development training, and tangible goods to families under served citizens
- Provide educational, health and human service programs for the youth and senior citizens
- Unite the South Fulton community across all racial, religious and economic barriers



Our Region

The South Fulton Area

- Union City
- College Park
- Fairburn
- East Point
- Hapeville
- Chattahoochee Hill
- City of South Fulton
- Palmetto



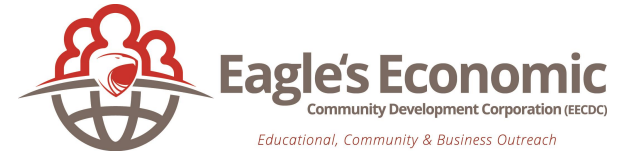
Our Community

- According to United Way research, our community has a 39.1% child well being rate
- Fulton County has the highest homeless rate nationwide
- <https://performance.fultoncountyga.gov/stat/goals/r6x8-2ipj/ccuj-axfx/t3nt-a52q>
- Student achievement rate for South Fulton schools is so low they don't even rank
- <https://www.usnews.com/education/best-high-schools/georgia/districts/fulton-county-106344>



Our Community cont'd...

- Does not even make top 50 of the safest cities in Georgia
- Fulton county violent crime rate is 56.7% (US average is 31.1%)
- Fulton county property crime rate is 56.5% (US average is 38.1%)
- College Park, Union City, East Point, Albany and Americus are the cities with the highest violent crime rate



What Is Our Value?

Disney



EECDC



Value Proposition

- We are providing **HOPE** and thus aim to re-design the socio-economic landscape of the South Fulton area for global impact through innovation and synergy




Eagle's Economic

Community Development Corporation (EECDC)

Educational, Community & Business Outreach



A background image showing a group of diverse people, including children and adults, smiling and looking down at something together. The image is dimmed and serves as a backdrop for the text.

Families, youth, teens and adults in the South Fulton area

Who Are We Targeting?

Youth Programs



Eagle's Economic
Community Development Corporation (EECDC)
Educational, Community & Business Outreach

- The “award-winning” South Fulton Arrow Youth Council
- Arrow Leadership institute afterschool program
- Summer Leadership Institute
(College and Career readiness for Middle High school students)
- Bullseye STEAM Academy
(Elementary students)
- Out of the box financial literacy
- Play 4 peace Atl. Campaign
(Education, Combatting Violence, Wellness, and Mentorship)

Adult Programs

- Eagle's Leadership Network
- Adult training and career services
- She Wears Hope (SWH)

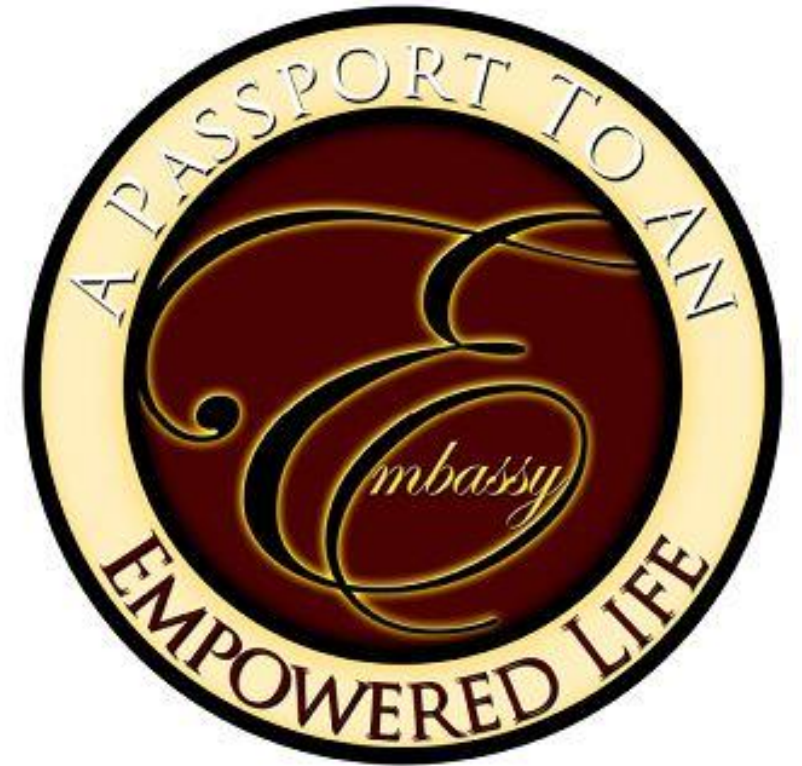




Regional Impact Project

The Embassy Empowerment Center of South Fulton

- “A ‘Communiversality’ of resources that will leave a lasting legacy for our children’s children”
- ~ Dr. Maya Taylor (Founder/Visionary)

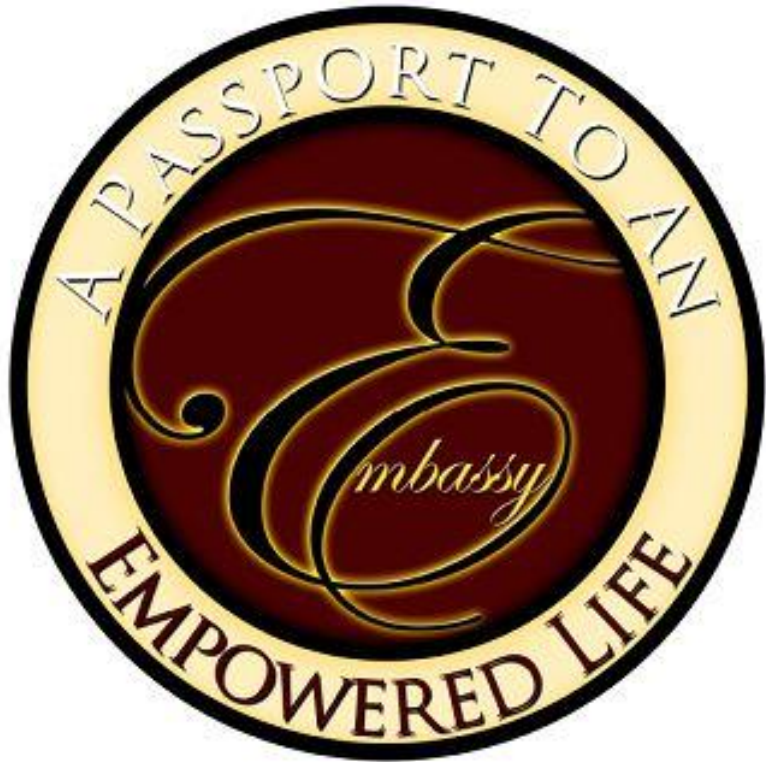




The Embassy

- An embassy is an official headquarters of ambassadors who are on a diplomatic mission.

The Embassy Empowerment Center will serve as a hub of resources for providing empowerment, shelter, and protection from outside negative influences, therefore giving our citizens a passport to an empowered life.

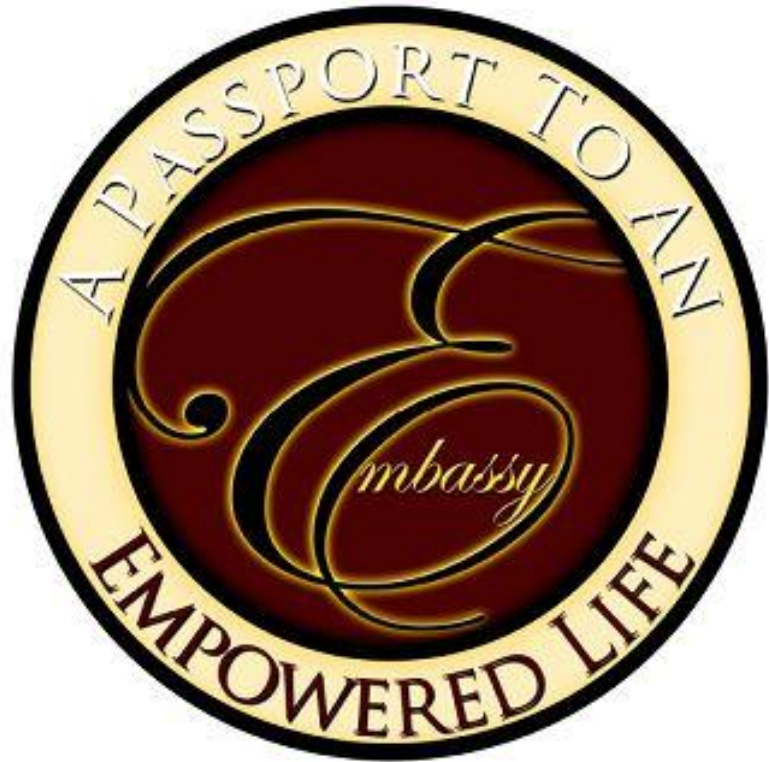


The Embassy Impact

- To connect the South Fulton communities to opportunities that will allow our citizens to live healthier, wealthier and more fulfilling lives
- **"Pride Is our Legacy"**
- P~ People
- R ~ Resources
- I ~ Infrastructure
- D~ Development
- E~ Economy

"Bringing Pride back to the Southside"
~Dr. Maya Taylor





Embassy Funding Forecasting

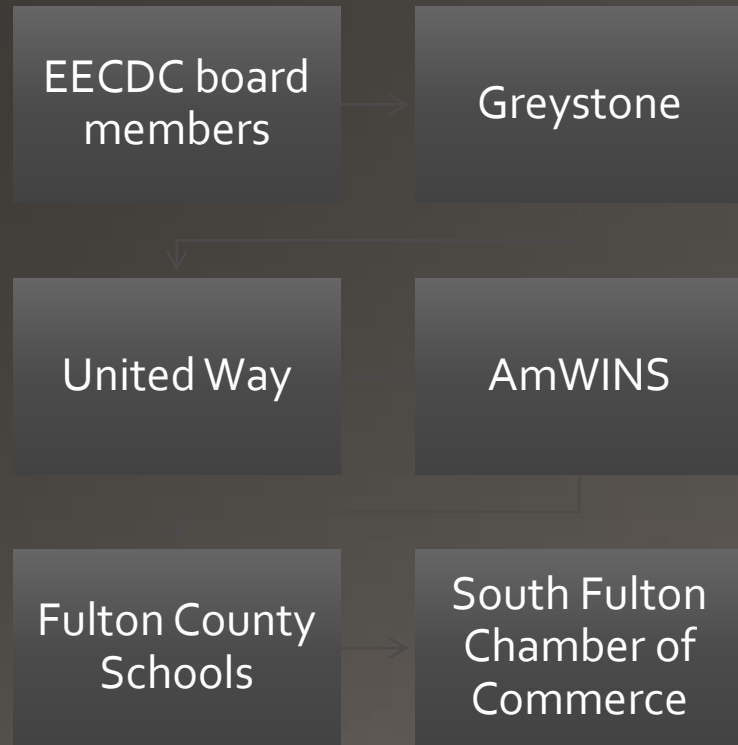
- Passport Membership(individual, corporate and athletic passports)
- Work force development projects
- Business/ Non-profit incubator
- Venue rental
- Restaurants
- Museum and Cultural Center
- Basketball court
- Athletic Fields
- State of the art Theatre and Auditorium
- Partners
- Sponsors
- Annual donors

Independent Service Providers

- Performing Arts Conservatory and Talent Development
- Fitness gym
- Music studio
- Wedding/ reception and Banquet hall
- Medical Clinic



Vanguard Alliance Partnerships (Current)



Vanguard Alliance Partnerships Cont'd

Fulton County
Board of
Education

Open Word
Christian
Ministries

South Always,
LLC

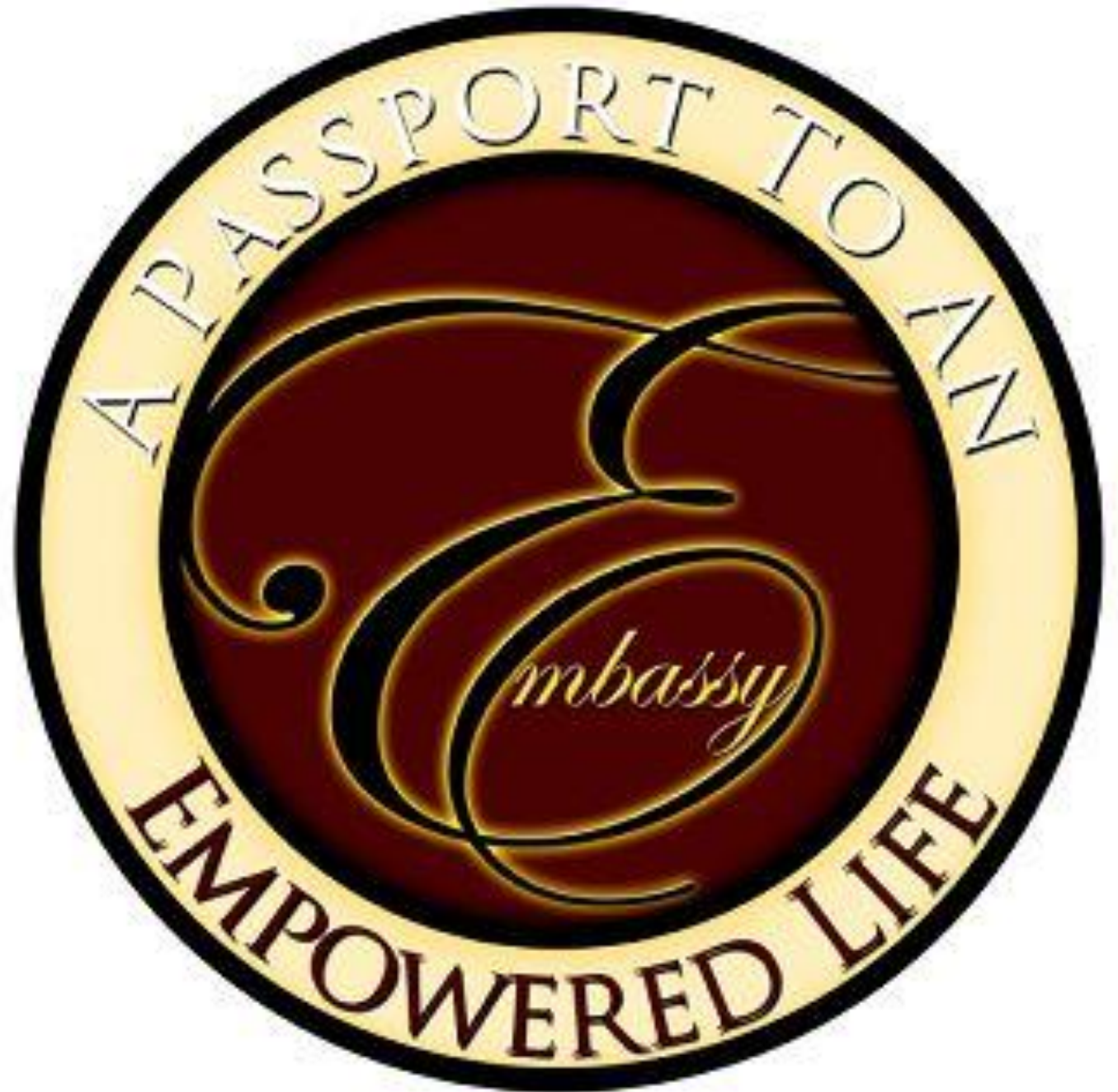
Atlanta Cares

Individual
donors

Matthew
Winter

Judge Shaw

Dr. Eric Echols





Can We Include You?